

Maine Shared Collections Cooperative Member Meeting

February 23, 2022

Matthew Revitt,
Maine Shared Collections
Librarian,
University of Maine

www.maineinonet.org/mscs/



Our Agenda

- Program updates (Matthew Revitt, Maine Shared Collections)
- Using MSCC & other data to manage materials (Deb Rollins, UMaine)
- Wider shared print universe (Sara Amato, Partnership for Shared Book Collections)



Membership Updates

- Thomas Memorial Library left MSCC in July
- Maine Medical Center joined MSCC in October, first medical library & first from MILS
- MSCC currently has 42 member libraries
- Providing onboarding for new staff at MSCC members



<http://www.maineinfonet.org/mscs/progress/>



Libraries working together to preserve Maine's print legacy

"From popular materials to one-of-a-kind local treasures, more than 40 Maine libraries ensure access to their broad and diverse library collections through deliberate coordination and strong collaborative partnerships."

-James Ritter, Maine State Librarian

About MSCC



Shared responsibility across the state for retaining print books and serials to ensure they remain accessible for future use.

**1.5
Million**

MSCC members have committed to retain 1.5 million books.



MSCC is among the largest shared print retention programs in North America.



A diverse community of libraries ensures a range of scholarly, popular, and local titles are retained.



Dedicated staffing support for members provided by the University of Maine.

Member Benefits



Preservation of content provides member libraries and their users guaranteed continuity of access to 1.5 million books and serials.



Gain a better understanding of your local print collection.



Guilt-free weeding allowing for local space savings.



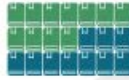
Have a voice in the direction of MSCC, provide feedback, and participate in future projects.



Become part of a wider library ecosystem.

www.maineinfonet.org/mscs/





What is Shared Print?

Shared Print and Shared Print Programs are collaborations among libraries to distribute the responsibility for maintaining collections, allowing partner libraries to reserve valuable space for materials that aren't available electronically, or for print items that are in high demand.

Over 23 million books retained!

That's around 3,276 miles of books which would reach from Maine to California.



More Space for You!

Sharing print copies between libraries means more space in libraries for other uses like meetings and technology.

It's not just books, libraries are preserving and sharing journals and magazines too.



Over 600,000 retained!

Shared Print Creates a Collective Collection

Collective collections combine the resources of libraries, creating more content for users to explore.



Keeping the Print

In an age of digital materials, shared print programs make sure the older rarer print materials stick around.

References

Read more about "Collective Collections" in Wikipedia

Courtesy of the
Partnership for Shared
Book Collections

<http://www.maineinfo.net.org/mscs/progress/>





Member Documentation

We're committed to keeping our members and the public updated on the status and ongoing progress of the Cooperative. We'll post relevant progress information and meeting summaries below; you may also wish to view our [recent presentations](#) or our [Project Updates](#).

MSCC Policies & Procedures

- [Memorandum of Understanding](#)
- [MSCC Operating Policies](#)
- [Procedure for Recording and Displaying Retention Commitments in Sierra](#)
- [Registering and Searching for Retention Commitments in OCLC](#)
- [Controlling Display of Retention Commitments](#)
- [Policy on Retention Commitment Changes](#)
- [Procedure for the External Transfer of Retention Commitments](#)
- [Shared Print Agreements for Monographs: A Users' Manual](#)
- [PAPR – Submitting Holdings & Requesting Overlap Reports](#)
- [Frequently Asked Questions](#)
- [MSCC Book labels \(Avery labels 6570 template\)](#)

Posters

- [MSCC Member Poster](#)
- [What Is Shared Print Infographic](#) (Partnership for Shared Book Collections)

Committee Meeting Material

- [MSCC Collections & Operations Committee](#)
- [MSCC Executive Committee](#)

Retention Models

- [2013 & 2019 Retention Model Summaries](#)
- [2013 Retention Scenario Step One – Criteria](#)
- [2013 Retention Scenario Step Two – Criteria](#)
- [2013 Journals/Serials – Criteria](#)

Explore MSCC

[About Us](#)

[Joining MSCC](#)

[MSCC History](#)

[MSCC Staff](#)

[MSCC Members](#)

[Project Updates](#)

[Search for MSCC retained titles](#)

For MSCC Members

[Member Documentation](#)



MSCC Governance

- **MSCC Executive Committee**, responsible for overall governance of MSCC.
Retirements will mean new members needed later in 2022.
- **MSCC Collections and Operations Committee**, oversees issues related to the selection of materials for retention, as well as issues related to holdings disclosure and access/delivery.

Seeking a volunteer with collection management expertise to represent smaller/Minerva libraries on Collections & Operations Committee.



Out of Scope for Retention

Materials you can remove commitments on:

- Textbooks
- Guides e.g. travel guides, **self-help** & pet training
- Manuals e.g. technology manuals
- Outdated health, legal & consumer information
- Government and legal documents

Also added in 2021-2022:

- Republished journal articles or special issues of journals
- Exhibit catalogs and pamphlets (not related to Maine)
- Translated books of popular fiction/non-fiction

See: [MSCC Major Operating Policies](#)



GreenGlass Access

- Reminder that MSCC libraries will lose access to GreenGlass on June 30, 2022
- Be sure to export any reports or other data prior to then



OCLC Registration Complete



OCLC SHARED PRINT SOLUTIONS

Functionality across services

WorldShare® Record Manager

Edit Shared Print commitment



[Webinars on ways to register Shared Print and Working with Shared Print in OCLC](#)

https://help.oclc.org/Metadata_Services/Shared_Print



Adding & Removing MSCC commitments in OCLC

Please remember to record any new commitments (from transfers) in Sierra & OCLC

MSCC specific Connexion guidance coming soon.



Finding MSCC Commitments

MaineCat - most comprehensive <http://mainecat.maine.edu/>

OCLC - Connexion, Record/Collection Manager, FirstSearch and various APIs.
See "[Functionality across services](#)" doc.

Searchbox available <http://www.maineinfonet.org/mscs/search-for-mscc-retained-titles/> - Data pulled from the OCLC API.

GreenGlass - MSCC commitment data is in GreenGlass for libraries with a subscription

Serial commitments can also be found in the: [Print Archives Preservation Registry \(PAPR\)](#)



Searching for MSCC Commitments

Search for MSCC retained titles

Search the 1.5 million MSCC retention holdings. Please note, commitments from non-OCLC members (Minerva and UMaine Fort Kent) are not included in the search.

Search OCLC Number:

Search

<http://www.maineinfonet.org/mscs/search-for-mscc-retained-titles/>



Collection Comparison Tool

The Collection Comparison Tool allows you to upload a list of local records to generate an instant comparison with the PAPR archived titles registry.

Brief instructions:

- Input file of local records must be a CSV file.
- Up to six columns of data are allowed in the input file.
 - The first two columns must be OCLC Number and ISSN, in that order. Each row must include either an OCLC Number or an ISSN, or both. If neither of these fields is included for an entry, it will not be able to match to any records in the PAPR database.
 - The last four columns are optional, and can be used to include data points you would like to have included in the output report (such as local bib id, holdings location, title, call number, etc.).
- Each column must have a heading.
 - Columns that are not used in the input file will be marked as "null" in the output report.
- Upload files up to 250MB (Up to 500,000 rows in a csv file with 2000 characters each row).

Upon uploading your local title list, the Collection Comparison Report is downloaded to your computer as a zip folder (please be aware: the larger the file, the longer it takes). This folder may contain one or two output files: Not Yet Committed (entries from your input file that did not match to any records in the PAPR database), and Committed Matches (entries from your input file that did match to records in the PAPR database).

Please see the [User Manual](#) and [FAQs](#) for this tool for additional support. If the supporting documentation cannot answer your question, please reach out to the PAPR team at papr@crl.edu.

Select file to upload

Choose File

Browse

Upload

This tool is available as part of the CDL, CRL & HT Collaboration for Shared Print Infrastructure. It is made possible because of the cumulative efforts of many: the original work undertaken by CRL and CDL, funded by the Mellon Foundation, to conceive and develop PAPR; subsequent contributions by WEST in developing the AGUA graphic interface and on-the-fly reporting capability; and the many institutions and organizations, most recently HathiTrust, who have striven to make their data openly available for library comparisons.

Questions?



UMaine - Using MSCC & other data to manage materials

UMaine decided to stop supporting the Darling Marine Center collection. Of 11,163 items at DMC listed in catalog, 1,568 were designated for MSCC retention, so needed to move them and some other selected titles back to Orono for integration into Fogler Library's stacks.

Since Fogler has crowded shelves, did some weeding in the areas that would be most affected.



Retrievals from DMC

1. Ran review file to capture the MSCC items housed at the DMC. Removed DMC MSCC items from file if they were copy 2s (i.e. Orono already owned a circulating MSCC copy).
2. Ran review files to scan the non-MSCC items at DMC.
3. Pack DMC items & shelve at Orono (some discards because items in poor condition).
4. Cataloging staff used edited retrieval spreadsheets to upload to Sierra and bulk-edit the location changes.



Withdrawals from UMaine Orono Stacks

1. Ran review files to identify items for possible withdrawal
 - a. Items with 0 circulations
 - b. Items not MSCC / committed to retain
 - c. Four files - GC, QH, QL, and SH – sorted by call number then exported to Excel
2. Reviewed titles on each sheet; moved some to a “keep” tab; created a “pull” list for likely withdrawal.
3. Staff pulled the books, including all volumes in a serial even if only some had 0 circs.
4. Cataloging withdrew items via barcode scan process, which was very quick for changes in both Sierra and OCLC.
5. More than **2,261 items** were withdrawn, since some were serial volumes that were not on the 0-circ review sheets, but were on the “pull” carts.



Withdrawals from UMaine Orono Stacks

item category	non-MSCC titles reviewed	kept	withdrawn from Orono	added to Orono from DMC
DMC serial titles (~170 vols)				20
DMC gov docs				226
DMC other LC call numbers				634
GC	219	12	207	238
QH	1,917	819	1,098	307
QL	1,194	513	681	420
SH	382	107	275	160
TOTAL	3,712	1,451	2,261	2,005



Questions?

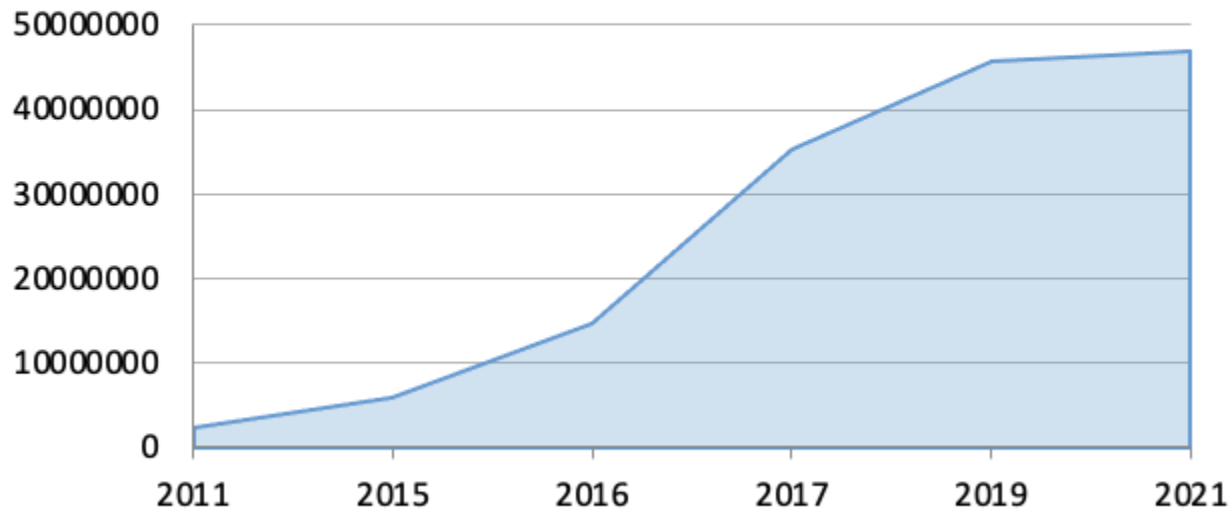


Number of Retention Commitments Registered in OCLC

	2/14/2022
Number of LHRs registered in WC*	25,930,490
BY PROGRAM	
CALD Cooperative Collection Management Program	286,422
Central Iowa Collaborative Collections Initiative (CI-CCI)	113,703
ConnectNY Shared Print Trust Program (CNY)	154,178
Consortium of UNC Shared Print (CUSP)	427,751
COPPUL SPAN	389,685
EAST	9,966,737
Florida Academic Repository (FLARE)	797,299
HathiTrust Shared Print Program	9,601,941
Maine SC	1,493,445
Michigan Shared Print Initiative (MI-SPI)	512,222
SCELC Shared Print	1,786,992
Scholars Trust	41,699
UCL Shared Print	1,065
Washington Research Library Consortium (WRLC)	165,894
WEST	14,039
WEST Bronze	4,930
WEST Gold	3,917
WEST Silver	4,680



Growth of Shared Print Programs 2011 - 2021



From 2.3 million monographs retained in 2011 to 46.8 million in 2021
An increase of over 2,000%



The cat that didn't bark



David Whitehair • 14 July 2021 • [Cataloging](#) • [Print Collections](#) • [Resource Sharing](#)



About a year ago, OCLC completed a two-year project (funded by the Andrew W. Mellon Foundation) with the [Center for Research Libraries](#) (CRL) that, among other enhancements, added support for the registration of serial retention commitments in [WorldCat](#). These enhancements not only help [improve discovery of shared print data \(PDF\)](#) across all OCLC services, but also bolster CRL's Print Archives Preservation Registry ([PAPR](#)) and other partner efforts.

At the time that project was completed, we estimated OCLC and its member institutions would register about 15 million commitments over the course of the year. As of today, the community has actually added more than 25 million retention commitments.

Wider Shared Print Universe



Sara Amato
sara@sharedprint.org

Sara Amato is the Data Librarian for EAST, responsible for technical and systems aspects of the project. Sara also serves as the Program Coordinator for the Partnership for Shared Book Collections (sharedprint.org).





PARTNERSHIP FOR SHARED BOOK COLLECTIONS

In 2020, MSCC became one of the founding members of the Partnership for Shared Book Collections.

- 17 Member Programs across 42 states and provinces representing 359 participating libraries.
- Coordinating collaboration for the protection of print books.
- A venue for sharing expertise, research, advocacy and work at scale.
- Focus on making shared print equitable, responsible, and sustainable.





scelc



EAST EASTERN ACADEMIC SCHOLARS' TRUST



Center for Research Libraries
.....
GLOBAL RESOURCES NETWORK

UNIVERSITY OF CALIFORNIA

Libraries



COLORADO ALLIANCE OF RESEARCH LIBRARIES



COPPUL



ConnectNY



HATHI TRUST



ReCAP

The Research Collections and Preservation Consortium



Council of Prairie and Pacific University Libraries



Minitex

ACADEMIC LIBRARIES OF INDIANA



Michigan Shared Print Initiative (MI-SPI)



Primary Services of the Partnership

- Best practices
- Marketing/communications
- Shared print efficiencies
- Research into issues of importance to shared print
- Resource sharing

See <https://sharedprint.org/> for more details



Current Best Practices

- Collection Scope of Shared Collections
- Digital Surrogates
- Disclosure of Items in Local Systems
- Exiting a Shared Print Program
- Facsimiles
- Inventory
- Memorandum of Understanding (MOUs)
- Preservation in a Shared Print Program
- Program Assessment
- Resource Sharing & Access
- Retention Period and Survivability
- Scarce Copies
- Shared Print Education and Awareness
- Sharing Metadata & Records
- Storage Environment
- Transferring Commitments or Materials



Current and Future Partnership Initiatives

- Shared Print Toolkit
- Risk research on optimal number of copies to retain
- Pilot research project with OCLC to investigate shared print holdings by subject area
- How can shared print provide a further safety net should member libraries be unable to continue to commit to retentions?
- Continued advocacy on the value of shared print through communications efforts and ROI tools



Shared Print Today

Building bigger and better together

Creating and using collective collections at scale

Advocacy with service providers to integrate shared print into local library workflows and discovery

Hundreds of libraries retaining millions of book and journal titles made accessible for study, teaching, research and scholarship



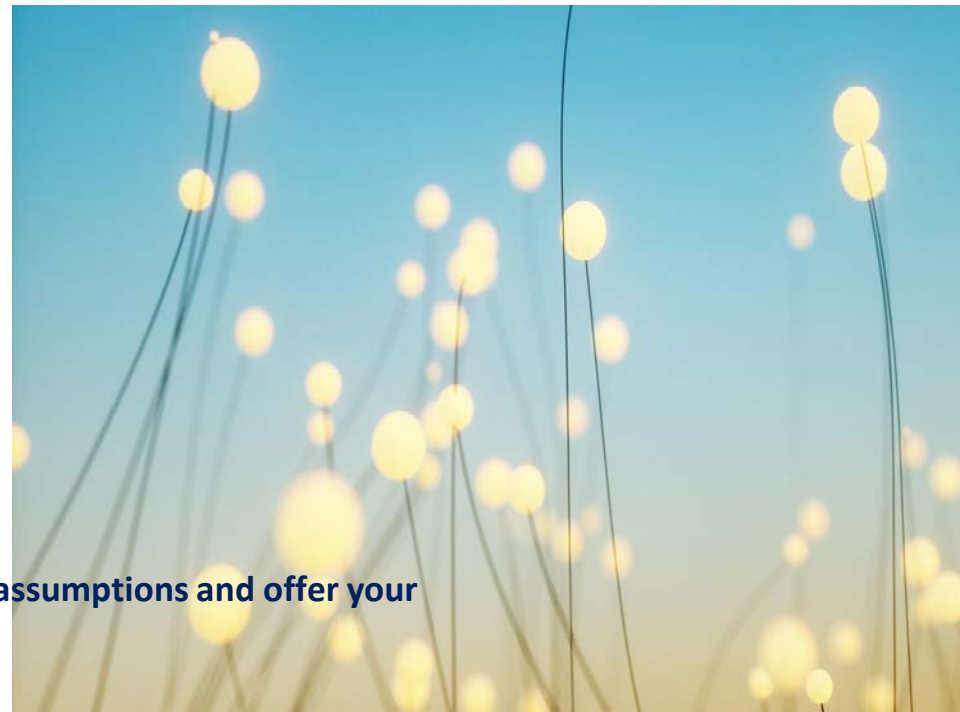
Shared Print Tomorrow

Open data with innovative and interoperable tools

More fully embedded in the collection lifecycle

Broader, deeper and more inclusive participation by the diversity of academic and research libraries – and beyond

Please ask questions, express skepticism, challenge our assumptions and offer your ideas!



Staying in Touch and Questions

PAN listserv

PAN-ops listserv

<http://listserv.crl.edu>

Partnership “interested” google group:

<https://groups.google.com/a/sharedprint.org/g/interested>

[OCLC Community Center for GreenGlass and Shared Print](#)

An OCLC forum dedicated to their GreenGlass product and shared print, access is limited to OCLC subscribers

Questions?

